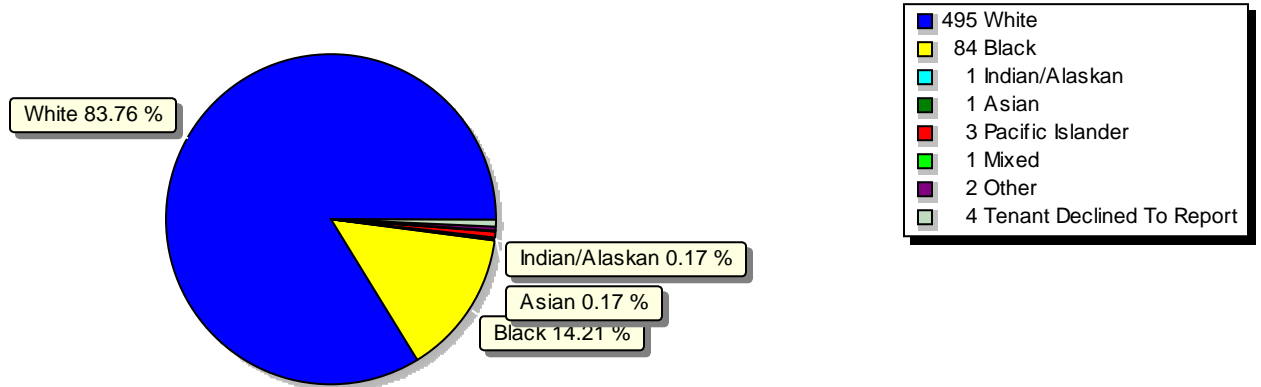
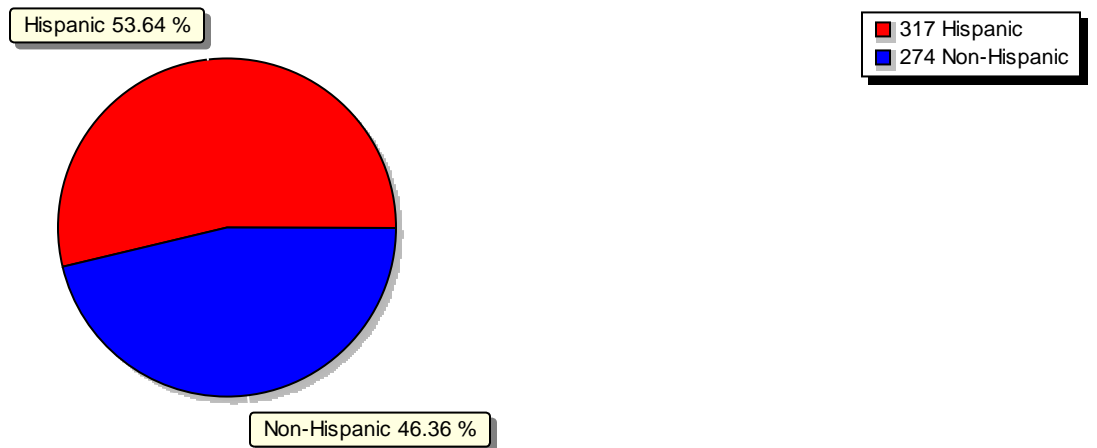


San Marcos Housing Authority Demographic Data Report

Race



Ethnicity

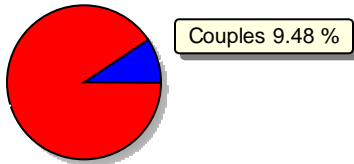


San Marcos Housing Authority Demographic Data Report

Number of Family Members = 1337
 Number of Families = 591
 Average number of members per Family = 2.26
 Number of Male heads of household = 138 (23.35%)
 Number of Female heads of household = 453 (76.65%)
 Number of Couples = 56

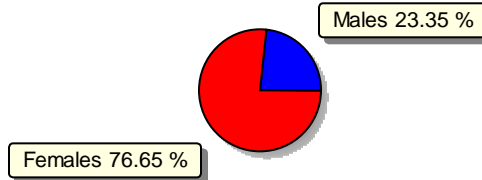
Non/Single Families

■ 56 Couples
■ 535 Single



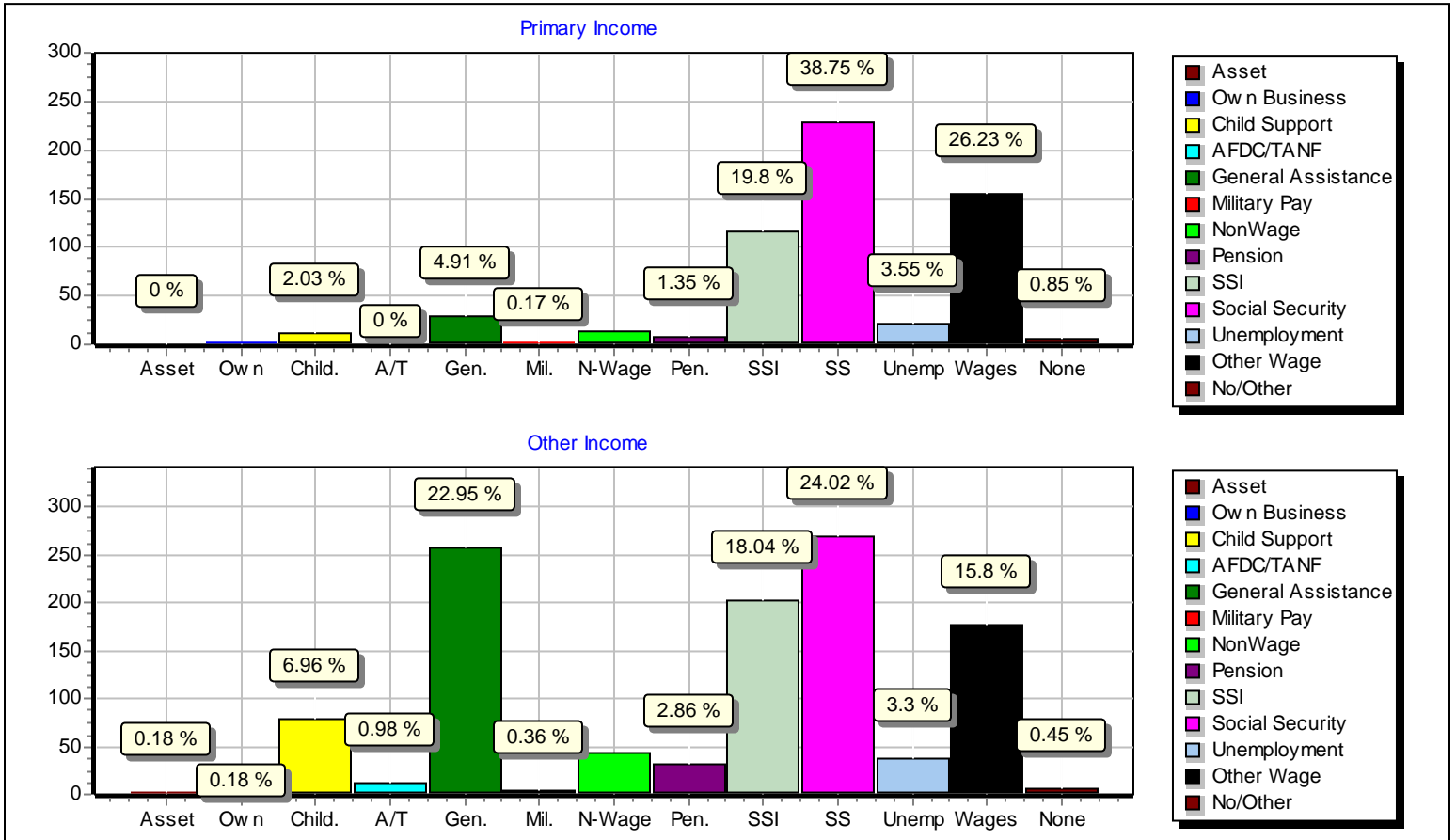
Head of Household Gender

■ 138 Males
■ 453 Females



0 (0.00%)	Families with primary income from Asset
1 (0.17%)	Families with primary income from Own Business
12 (2.03%)	Families with primary income from Child Support
0 (0.00%)	Families with primary income from AFDC/TANF
0 (0.00%)	Families with primary income from Medical Reimbursement
0 (0.00%)	Families with primary income from Federal Wage
29 (4.91%)	Families with primary income from General Assistance
0 (0.00%)	Families with primary income from HA Wage
0 (0.00%)	Families with primary income from Indian Trust
0 (0.00%)	Families with primary income from Annual Imputed Welfare
1 (0.17%)	Families with primary income from Military Pay
13 (2.20%)	Families with primary income from NonWage
8 (1.35%)	Families with primary income from Pension
117 (19.80%)	Families with primary income from SSI
229 (38.75%)	Families with primary income from Social Security
21 (3.55%)	Families with primary income from Unemployment
155 (26.23%)	Families with primary income from Other Wage
0 (0.00%)	Families with primary income from MtW Income
5 (0.85%)	Families with primary income from No/Other
2 (0.34%)	Families with income from Asset
2 (0.34%)	Families with income from Own Business
78 (13.20%)	Families with income from Child Support
11 (1.86%)	Families with income from AFDC/TANF
0 (0.00%)	Families with income from Medical Reimbursement
0 (0.00%)	Families with income from Federal Wage
257 (43.49%)	Families with income from General Assistance
0 (0.00%)	Families with income from HA Wage
0 (0.00%)	Families with income from Indian Trust
0 (0.00%)	Families with income from Annual Imputed Welfare
4 (0.68%)	Families with income from Military Pay
44 (7.44%)	Families with income from NonWage
32 (5.41%)	Families with income from Pension
202 (34.18%)	Families with income from SSI
269 (45.52%)	Families with income from Social Security
37 (6.26%)	Families with income from Unemployment
177 (29.95%)	Families with income from Other Wage
0 (0.00%)	Families with income from MtW Income
5 (0.85%)	Families with income from No/Other
591	Families Listed

San Marcos Housing Authority Demographic Data Report

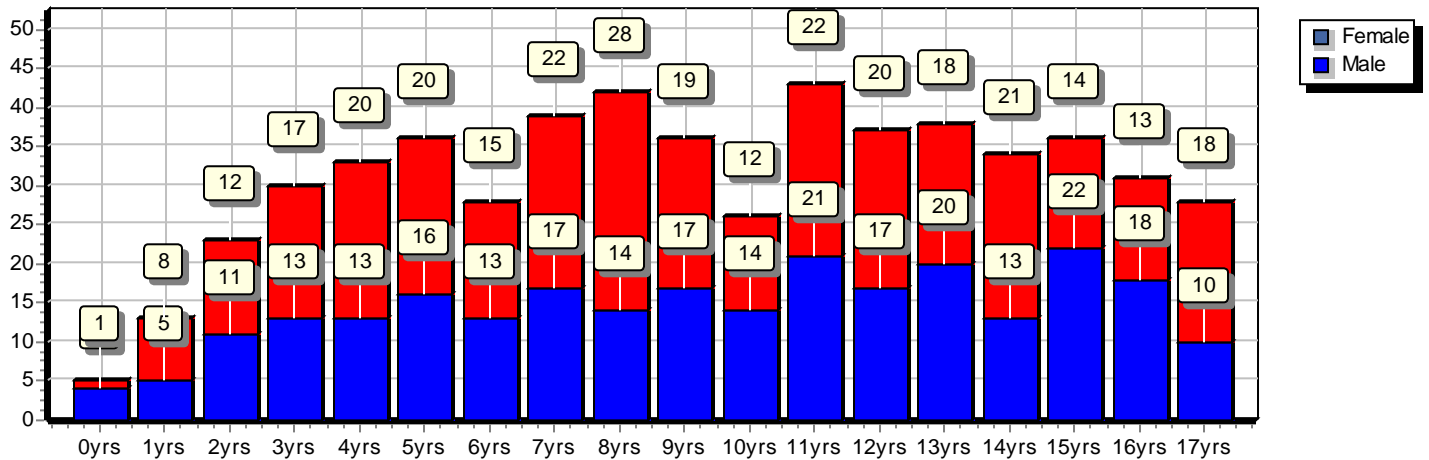


San Marcos Housing Authority Demographic Data Report

	Age	Total	Males	Females
Number of Children Who are <=	1	18	9	9
Number of Children Who are =	2	23	11	12
Number of Children Who are =	3	30	13	17
Number of Children Who are =	4	33	13	20
Number of Children Who are =	5	36	16	20
Number of Children Who are =	6	28	13	15
Number of Children Who are =	7	39	17	22
Number of Children Who are =	8	42	14	28
Number of Children Who are =	9	36	17	19
Number of Children Who are =	10	26	14	12
Number of Children Who are =	11	43	21	22
Number of Children Who are =	12	37	17	20
Number of Children Who are =	13	38	20	18
Number of Children Who are =	14	34	13	21
Number of Children Who are =	15	36	22	14
Number of Children Who are =	16	31	18	13
Number of Children Who are =	17	28	10	18
Number of Children Who are =	18	7	1	6
		565	259	306

Average Age: 9

Age Comparison



Housing Authority =ALL
 Project =ALL
 Unit or property =ALL
 Site =ALL
 Building number =ALL
 County =ALL
 Region =ALL
 Locality =ALL
 Census tract =ALL
 Program type = All
 Active families only